

Kunkel 

Rudolf Kunkel Maschinenbau GmbH



ENGINEERING FOR
TRANSPORTATION
INFRASTRUCTURE
INNOVATIVE AND
FUTURE-ORIENTED



rk



QUALITY
made in Germany

EDZ 225
RAIL BENDING MACHINE

www.kunkel-maschinenbau.de

EDZ 225

RAIL BENDING MACHINE

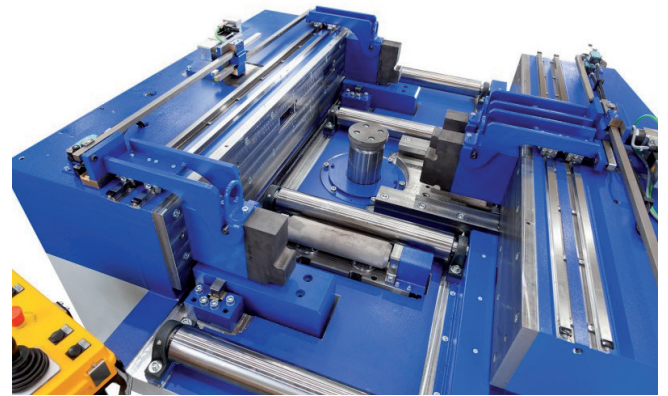
Horizontal hydraulic Bending and straightening press 225 t (2250 kN) for rails and sections

- Straightening blocks motorized
- Mobile operation panel
- Camber measuring by laser, and PLC-controlled bending operation according bending plan
- Simple PLC Standard Control

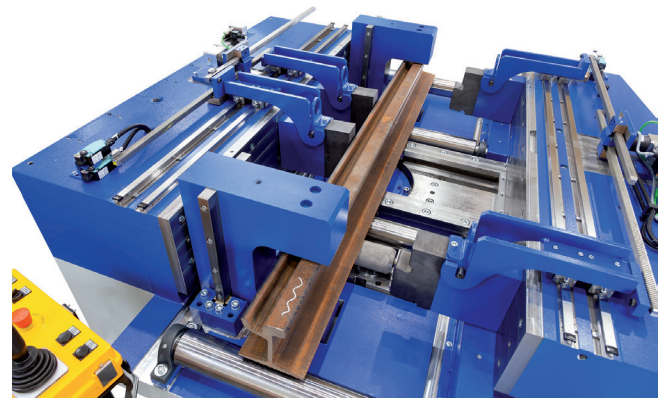


TECHNICAL DATA

Compressive force	2.250 kN/225 t
Adjustable	200-2.250 kN
Cylinder stroke	430 mm
Motor power	22 kW
Pump capacity	280 bar
Speed	2,0/0,6 m/min
Normal stress	400V +/- 5% / 50 Hz +/- 1%
Tool height standard	240 mm
Feed rollers above floor	800 mm or higher as desired
Culvert	450 mm
Weight	17.000 kg
Color	RAL color as desired



Technical changes possible



KUNKEL BENDING MACHINES - PROVEN FOR DECADES

Kunkel straightening and bending machines have been in use for many decades. From simple mobile devices to the standard design for bending rails and substructures itself offers a wide range of applications. The horizontal design of the machine allows easy transport and optimal visibility into the work area. The presses are built on rugged welded steel structures. They are equipped with hydraulic cylinders made of solid steel and indestructible guides for an extremely long life.

Machines in special version even allow bend rails in vertical and horizontal plane without the need to turn them in the machine. A simple control via joystick allows sensitive control, positioning and pressing.

You want the
EDZ 225 live
 experience with users?
 Make an appointment
 with us!



EDZ 225 RAIL BENDING SYSTEM

- Efficient bending of rails and switches
- Bend in both directions without turning
- Height correction without turning
- Rail breakage test according to DIN EN 16771 grooved rail and according to DIN EN 14730-1 Vignole rails



right curve



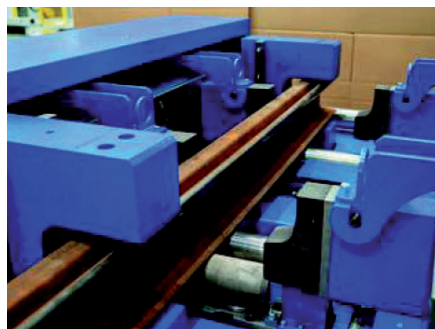
left curve



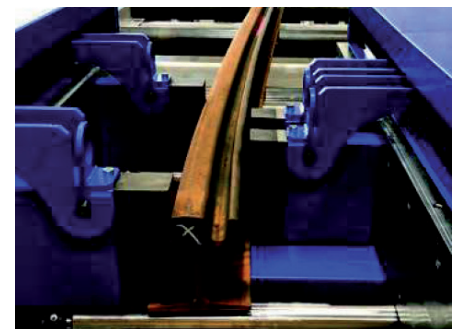
Ergonomic workplace



EDZ 225 with guard for break tests



Edit in two levels and measure
 in one clamping



Curve measuring (Rail deflection) by laser

FUNCTIONAL AND STABLE - EXTREMELY VERSATILE

The wide range of control options - from simple slider control to industrial PC – expresses the various possibilities, Kunkel machines offer. Laser sensors measure the straightness, without having to go out of the machine. In addition, measuring machines are available which measure the section with the highest precision. There is also the option to equip the machine with a protective cage to perform breaking tests for welded pieces with electronic documentation of the pressure-stroke history. The sturdy design of the machine makes it possible.



Rudolf Kunkel Maschinenbau GmbH

BY PRACTITIONERS FOR PRACTITIONERS

We have been building straightening and bending machines for 3 generations. Customers can't only expect quality „Made in Germany“, but also a high investment security. Kunkel machines retain their value. When deciding on a stronger, technically more advanced or newer machine we will accept the „old one“ in payment. We offer a comprehensive know-how and a powerful service.

STRAIGHTENING AND BENDING MACHINES FROM KUNKEL

Kunkel machines are suitable for manufacturing as well as industrial production. Our straightening and bending machines cause only negligible follow-up costs. All Kunkel tool holders are also suitable for self-made or existing tools / convertible. Another plus is the ease of use - every worker in your company can operate these machines. We offer machines for every budget. You have the choice – from cam control to fully automatic PC control. Upgrading and the trade-in of old Kunkel machines is possible.

WE OFFER COMPLETE SOLUTIONS - ACCORDING TO YOUR WISHES!



RUDOLF KUNKEL MASCHINENBAU GMBH

Würzburger-Straße 8-12
63856 Bessenbach
Germany

Fon: +49 60 95 / 10 94
E-Mail: info@kunkel-maschinenbau.de

www.kunkel-maschinenbau.de